



Roseville Fire Department

Fire & Life Safety Division

316 Vernon Street Suite 480 · Roseville, CA 95678 · (916) 774-5800 · FLSDivision@roseville.ca.us

Fire & Life Safety Standard

Title: Fire Alarm System

Note: *This standard is a summary of Roseville Fire Department clarifications of City and State Codes. Information contained herein applies to typical circumstances and may not address all situations.*

PURPOSE

This standard was developed with safety as the principle objective, pursuant to the California Fire Code (CFC) the fire code official is authorized to render interpretations of the CFC, and to adopt policies, procedures, rules and regulations in order to clarify the application of its provisions. Such interpretations, policies, procedures, rules and regulations shall be in compliance with the intent and purpose of the CFC and shall not have the effect of waiving requirements specifically provided for in the CFC.

SCOPE

This standard applies to the installation of new and existing fire alarm and water monitoring systems. These systems shall be designed and installed in accordance with the CFC and the applicable National Fire Protection Association (NFPA) standards.

FINDINGS

The Roseville City Council adopted the CFC with local amendments contained within the [Roseville Municipal Code](#) and are as follows:

Fire Control Room. An approved fire control room shall be provided for all buildings protected by an automatic fire extinguishing system. Fire control rooms shall meet the following requirements:

1. Fire control rooms shall contain only fire system control valves, fire alarm control panels and other related fire system equipment.
2. The location of the fire control room shall be approved by the fire code official.
3. Fire control rooms shall have minimum dimensions of five feet by seven feet.
4. Fire control rooms shall be constructed with a one-hour fire rating.
5. Fire control rooms shall be provided with an exterior access door approved by the fire code official.
6. Durable signage shall be provided on the exterior side of the access door. "FIRE CONTROL ROOM"
7. Storage of materials in fire control rooms is prohibited.

Alarms. One exterior approved audible alarm and visual strobe device, located on the exterior of the building in an approved location, shall be connected to each automatic sprinkler system. Such sprinkler water flow alarm devices shall be activated by water flow equivalent to the flow of a single sprinkler of the smallest orifice size installed in the system. Where a fire alarm system is installed, actuation of the automatic sprinkler system shall actuate the building fire alarm system. Visible alarm notification appliances shall not be required except when required by Section 907. A single approved audible alarm and visual strobe device shall be provided in the interior of the building in a normally occupied location within each space, unless otherwise required by the California Fire Code.



Roseville Fire Department

Fire & Life Safety Division

316 Vernon Street Suite 480 · Roseville, CA 95678 · (916) 774-5800 · FLSDivision@roseville.ca.us

Monitoring. Fire alarm systems required by this chapter or by the California Building Code shall be monitored by a Central Station Service (UUFx) that is listed in the current edition of the UL Online Certifications Directory unless otherwise required by the California Fire Code.

Exceptions: Monitoring by a supervised station is not required for:

1. Single and multi-station smoke alarms required by Section 907.2.11
2. Smoke detectors in Group I-3 occupancies *shall be monitored in accordance with section 907.2.6.3*
3. Automatic sprinkler systems in one- and two- family dwellings

Combination Alarm Systems. Combination fire and burglar alarm systems are not permitted.

Exception: Group R-3 and R-3.1

Fire-Extinguishing Equipment. Automatic fire-extinguishing systems for the protection of grease removal devices, hoods, duct systems and cooking equipment shall be monitored in accordance with 907.6.6.

Fire Alarm Control Panel. Buildings requiring a fire alarm system shall be equipped with a single fire alarm control panel unless approved by the Fire Code Official

PLAN SUBMITTAL REQUIREMENTS

The Roseville Fire Department utilizes an [Online Permitting Services \(OPS\) Portal](#) for Fire System permit applications. All application packets including plans and technical documents must be submitted in digital format. Applications may also be submitted at the Roseville Permit Center on approved electronic medium.

DOCUMENTS

1. [Fire Plan Submittal Application](#)

PLANS

1. Complete plan set, stamped and signed by the preparer, with the appropriate stamp and/or license number on all sheets, when applicable (electronic signatures accepted).
2. Scope of Work.
3. Floor plan indicating the use of all rooms.
4. Locations of alarm-initiating devices.
5. Location of fire alarm control panel (FACP), transponders and notification power supplies.

TECHNICAL DOCUMENTS

1. Battery calculations.
2. Voltage drop calculations.
3. Manufacturer data sheets indicating model numbers and listing information for equipment, devices and materials.
4. The City of Roseville requires a UUFx type Central Station Certificate provided at the time of final inspection for all buildings equipped with a fire alarm or a water monitoring system. These systems shall be monitored by a Central Station Service (UUFx) that is listed in the current edition of the UL Online Certifications Directory.



Roseville Fire Department

Fire & Life Safety Division

316 Vernon Street Suite 480 · Roseville, CA 95678 · (916) 774-5800 · FLSDivision@roseville.ca.us

FIRE DEPARTMENT ACCEPTANCE TESTING

The following installation requirements must be met before an acceptance test is witnessed by a member of the Roseville Fire Department:

1. Prior to requesting a final system inspection and acceptance test the installer shall perform a satisfactory, 100% test of the system. The entire system shall be installed to completion.
2. A 24-hour battery test, if applicable, shall be performed and witnessed by a member of the Roseville Fire Department. This required test shall include all additional power supplies and boosters. Power shut-off shall be completed 24-hours prior to inspection. Shut-off and restoration of all systems shall be verified prior to final approval.
3. A functional test of all new equipment shall be conducted. 10% of all existing components shall be tested for amended systems.
4. Signal initiation and central station retransmission shall be demonstrated. Signal initiation to central station shall not exceed 90 seconds. Retransmission to fire dispatch shall not exceed 60 seconds.
5. At each new installation, a water flow bell shall be installed outside of the fire control room. It shall only sound upon the water flow switch being activated. In addition, a STROBE shall be installed outside of the fire control room. It shall activate whenever any "alarm" condition is present at the FACP. A single approved horn/strobe device shall be provided in the interior of the building in a normally occupied location within each space/dwelling unit and floor level unless full notification is required.
6. Buildings, in which 3 or less initiating devices (as defined by NFPA 72) are proposed to be installed, shall be required to have a minimum of 4 distinct zones: trouble, supervisory, alarm and water flow.
7. Buildings, in which 4 or more initiating devices (as defined by NFPA 72) are proposed to be installed, shall be required to have fully addressable panels installed.
8. On systems with fully addressable fire alarm control panels, initiating devices shall be durably labeled with a simplified corresponding device address.
9. All specialized systems shall be connected to and monitored by the FACP as a separate zone.
10. Additional specialized systems that use a supplemental FACP shall be capable of transmitting a minimum of 4 distinct zones that mirror the exact same zones as the main FACP dialer. Panels that serve these specialized systems shall be identified in the fire control room on the laminated floor plan.
11. Automatic fire-extinguishing systems for the protection of grease removal devices, hoods, duct systems and cooking equipment shall be monitored in accordance with 907.6.6.
12. Upon activation of the fire alarm system, all electronic security locks shall release (fail-safe).
13. Duct smoke detectors are not required to be monitored on basic water monitoring system. If they are connected to the building's fire alarm or water monitoring system, they shall report as Supervisory only.
14. All circuit breakers shall be tagged and labeled, including breakers for additional power supplies. Each circuit breaker shall be locked in the "on" position.
15. Fire control rooms shall be properly labeled and constructed in accordance with Figure 2 of this standard.
 - a. No other equipment, such as HVAC units, water heaters, and/or domestic water supplies shall be allowed within the fire control room.



Roseville Fire Department

Fire & Life Safety Division

316 Vernon Street Suite 480 · Roseville, CA 95678 · (916) 774-5800 · FLSDivision@roseville.ca.us

16. A laminated floor plan (11" x 17" minimum) for each building floor shall be posted adjacent the FACP in the fire control room. It shall indicate the location of all initiating devices, inspector's test valve, monitored valves, main corridors, stairwells and elevators.
17. An approved visible sign shall be posted at all control valves, control panels and monitoring panel stating the name of the monitoring company and the 24 hour phone number of the Central Station.
18. Reset instructions and reset code shall be clearly posted at the FACP.
19. Fire alarm systems that use radio signals to transmit alarms shall be listed for use with the FACP. They shall also be capable of mirroring the exact same transmitting zones as the primary telephone line dialer.
20. Underground key or hub valves in roadway boxes provided by the municipality or public utility are not required to be monitored.
21. A document cabinet shall be mounted in the fire control room and include the following:
 - a. Record of Completion in accordance with NFPA 72.
 - b. Approved plan set.
 - c. For software based systems, a copy of the site specific software shall be stored on a non-volatile, non-erasable, non-rewritable memory device.
 - d. UL certification denoting the site specific UUFX certification.
22. A key for the FACP and pull station shall be provided in the KNOX Box.
23. Testing shall be completed per the approved manufacturer's specification sheets, NFPA 72 and this standard.
24. Additional 24-hour battery test may be performed, subject to the review by the Roseville Fire Department, once leased space exceeds 50% build-out.

INSPECTIONS

1. To schedule an inspection, research permit history, or apply for permits online please visit the City of Roseville Online Permitting Services Portal at permitsonline.roseville.ca.us.
2. Inspection times are approximate and may vary because of delays at previous inspections or emergency response by Roseville Fire Department personnel. Please allow time on either side of the inspection time for the inspector to arrive.
3. 48 hour notice is required when requesting an inspection. After requesting an inspection, check the Online Permitting Services Portal after 9 AM on the next business day to see the date and time that was assigned.

SYSTEMS OUT OF SERVICE

1. Refer to Roseville Fire & Life Safety Standard, Fire Watch Procedures for fire alarm systems out of service.

FALSE ALARMS

1. Prior to any person working on any monitored fire alarm system, the person shall place the system in "test" through the monitoring company.
2. If an alarm is transmitted from the Central Station to the Roseville Fire Department whenever anyone is working on a system, False Alarm Cost Recovery may apply. See the Roseville Fire Department Fee Schedule, as adopted by City Council.

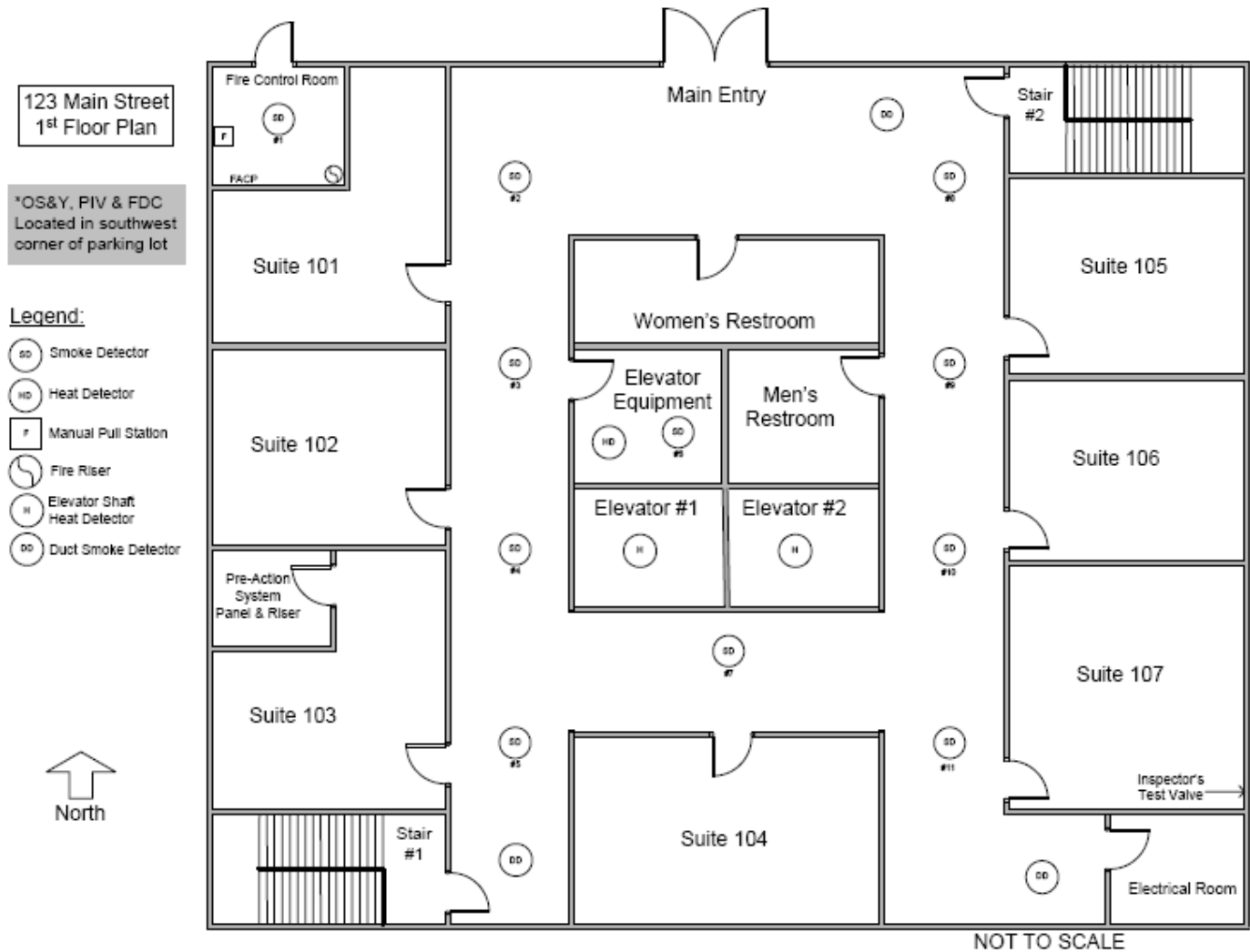


Roseville Fire Department

Fire & Life Safety Division

316 Vernon Street Suite 480 · Roseville, CA 95678 · (916) 774-5800 · FLSDivision@roseville.ca.us

Figure 1
Laminated Map





Roseville Fire Department

Fire & Life Safety Division

316 Vernon Street Suite 480 · Roseville, CA 95678 · (916) 774-5800 · FLSDivision@roseville.ca.us

Figure 2
Fire Control Room

